



TMG - CONSULTING ENGINEERS

High Performance | High Quality

CONTRACT NAME: [MILBOURNE GROUP – CONSULTING ENGINEERS, INC., THE]

GENERAL SERVICES ADMINISTRATION FEDERAL SUPPLY SERVICE

AUTHORIZED FEDERAL SUPPLY SCHEDULE PRICELIST

FEDERAL SUPPLY SCHEDULE CONTRACT 03FAC Facility Maintenance and Management

Contract Number:	GS-21F-036GA
Special Item Numbers:	871 204 - Metering Services 871 206 - Building Commissioning Services 871 207 – Energy Audit Services
Contract Period:	04/24/2017 thru 04/23/2022
Effective as of Modification:	Not Applicable
Business Size:	MWBE / Small Business / 8(a)

TMG – Consulting Engineers, Inc.
401 Hawthorne Lane, Suite 110/170
Charlotte, NC 28204
Phone: (704) 918-1914
Fax: (704) 859-5135
www.tmg-ce.com



On-line access to contract ordering information, terms and conditions, up-to-date pricing, and the option to create an electronic delivery order are available through GSA Advantage!™, a menu-driven database system. The INTERNET address for GSA Advantage!™ is: GSAAdvntage.gov

TABLE OF CONTENTS

ITEM	PAGE
SECTION I: Customer Information.....	3
SECTION II: Pricing / Labor Category Descriptions.....	6 - 10
SIN 871 204 Metering Services	
SIN 871 206 Commissioning Services	
SIN 871 207 Energy Audit Services	
SECTION III: Service Descriptions.....	11 - 13



SECTION I: CUSTOMER INFORMATION

1a. Table of Awarded Special Item Numbers (SINs):

871 204 Metering Services
871 206 Building Commissioning Services
871 207 Energy Audit Services

1b. Lowest Price Model Number/Lowest Unit Price:

See Page 6 (Prices shown in pricelist are net.)

1c. Labor Category Descriptions:

See Starting on Page 7

2. Maximum Order:

The Maximum Order for SIN's 871 204, 871 206, and 871 207 is \$1 million. Orders exceeding the maximum order threshold may be placed in accordance with clause I-FSS- 125, "Requirements Exceeding the Maximum Order (SEP 1999)."

3. Minimum Order:

The minimum dollar value of orders to be issued is \$100.

4. Geographic Coverage:

The geographic scope of this contract is domestic only.

5. Point(s) of Production (City, County, and State or Foreign Country):

Charlotte, North Carolina, USA
Bowie, Maryland, USA

6. Statement on Net Price:

Prices shown in pricelist are fully burdened. Discounts have already been deducted.

7. Volume Discount:

.05% for orders exceeding \$100,000.00 | 1.0% for orders exceeding \$300,000.00

8. Prompt Payment Terms:

NET 30 days

9a. Notification that Government purchase cards are accepted at or below the micro-purchase threshold:

Government Purchase Cards are accepted at or below the micro-purchase threshold.



9b. Notification whether Government purchase cards are accepted or not accepted above the micro-purchase threshold:

Government Purchase Cards are not accepted above the micro-purchase threshold.

10. Foreign Items (List items by country):

None

11a. Time of Delivery:

TBD at task order.

11b. Expedited Delivery:

TBD at task order.

11c. Overnight and 2-day delivery: Not Applicable

11d. Urgent Requirements: Not Applicable

12. FOB Points:

Destination

13a. Ordering Address:

TMG – Consulting Engineers, Inc.
401 Hawthorne Lane, Ste 110-170
Charlotte, NC 28204

Telephone: (704) 918-1914

Fax: (704) 859-5135

E-Mail: tmilbourne@tmg-ce.com

Website: www.tmg-ce.com

13b. Ordering Procedures:

For supplies and services, the ordering procedures, information on Blanket Purchase Agreements (BPA's) are found in Federal Acquisition Regulation (FAR) 8.405-3.

14. Payment Address:

TMG – Consulting Engineers, Inc.
401 Hawthorne Lane, Ste 110-170
Charlotte, NC 28204

15. Warranty Provision:

Applicable – SIN 871 204

Standard Commercial Warranty offered by manufacturer

16. Export Packing Changes:

Not Applicable.



17. **Terms and conditions of Government commercial purchase card acceptance:**
Not Applicable.
18. **Terms and conditions of Government rental, maintenance, and repair:**
Not Applicable.
19. **Terms and conditions of installation:**
Not Applicable.
20. **Terms and conditions of repair parts indicating date of parts price lists and any discounts from list prices:**
Not Applicable.
21. **List of service and distribution points:**
Not Applicable.
22. **List of participating dealers:**
Not Applicable.
23. **Preventive maintenance:**
Not Applicable.
- 24a. **Environmental Attributes:**
Not Applicable.
- 24b. **Section 508 Compliance:**
Not Applicable.
25. **Data Universal Number (DUNS) Number:**
833065795



SECTION II: PRICING & LABOR CATEGORY/PRODUCT DESCRIPTIONS

LABOR CATEGORIES AND DAILY RATES				
LABOR CATEGORY	HOURLY RATE	SIN 871 204	SIN 871 206	SIN 871 207
Senior Engineer	\$157.93	X	X	X
Project Manager	\$129.67	X	X	X
M/E/P Engineer	\$124.69	X	X	X
Controls Engineer	\$124.69	X	X	X
Sr. Project Engineer	\$124.69	X	X	X
Project Engineer	\$114.61	X	X	X
Field Engineer	\$94.76	X	X	X
Administrative (Clerical)	\$64.84	X	X	X

LABOR CATEGORY YEARLY PRICE ESCALATION

Yearly Price Escalation (1.0 %)			
	2017	2018	2019
Senior Engineer	\$157.93	\$159.51	\$161.10
Project Manager	\$129.67	\$130.97	\$132.28
M/E/P Engineer	\$124.69	\$125.94	\$127.20
Controls Engineer	\$124.69	\$125.94	\$127.20
Sr. Project Engineer	\$124.69	\$125.94	\$127.20
Project Engineer	\$114.61	\$115.76	\$116.91
Field Engineer	\$94.76	\$95.71	\$96.66
Administrative (Clerical)	\$64.84	\$65.49	\$66.14



LABOR CATEGORY DESCRIPTIONS

Senior Engineer

Responsibilities:

- Provides leadership and authority to the development of large program initiatives.
- Responsible for the facilitation of understanding across a wide range of disciplines and program stakeholders.
- Participates and/or leads design team on complex projects.
- Manages the contractual relationship with clients and oversees several projects at the programmatic level.
- Meets and confers with client regarding the status of specific program and management activities and problems, issues or conflicts regarding resolution.
- Conducts and or participates in project staff meetings and client meetings to resolve issues through application of company resources or experiences gained on other projects.

Education:

- Bachelor's Degree (Mechanical or Electrical Engineering preferred) or equivalent relevant experience.
- Professional Engineering (P.E.) Registration and LEED AP or CEM (Certified Energy Manager) and CPMP (Commissioning Process Management Professional)

Experience:

- Minimum of 15 years relevant experience.

Project Manager

Responsibilities:

- Manages the day-to-day operations of more complex projects.
- Prepares and presents project status reports to company and client management.
- Manages the company staff assigned to the project.
- Resolves project staffing and planning issues.
- Conducts preliminary quality assurance over project deliverables and project activities.
- Manages project budget and project team.
- Performs submittal reviews.

Education:

- Bachelor's Degree (Mechanical or Electrical Engineering preferred) or equivalent relevant experience.

Experience:

- 7 years of engineering experience and at least 5 years of experience commissioning or troubleshooting major HVAC and control systems.



M/E/P Engineer

Responsibilities:

- Plans, conducts, and supervises projects, necessitating advanced knowledge and the ability to develop and apply new and unique methods and procedures.
- Organizes and prepares energy studies.
- Develops design documentation, performs design reviews, and develops commissioning plans and specifications.
- Coordinates the daily commissioning activities of the project from design through construction and warranty stages.
- Performs submittal reviews.
- Helps oversee and conduct systems testing and systems functional performance testing.
- Develops commissioning documentation and reports.

Education:

- Bachelor's Degree in Engineering or equivalent relevant experience.

Experience:

- 3 years of engineering experience and at least 2 years of controls experience or in commissioning M/E/P systems.

Controls Engineer

Responsibilities:

- Develops and performs writing and testing of complex customized controls programs.
- Applying computer science concepts and techniques in the design, testing, development, installation, simulation and maintenance of controls systems and software to satisfy engineering, scientific, or business data acquisition and information challenges.
- Providing system tuning and monitoring to ensure effective and efficient systems use.
- Integration of multiple operating systems and hardware platforms.
- Evaluating and making recommendations regarding system hardware and software requirements and capabilities.
- Server provisioning and administration; and/or networked systems in the support of operations.

Education:

- Bachelor's Degree (Mechanical or Electrical Engineering preferred) or equivalent relevant experience.

Experience:

- 3 years of experience



Senior Project Engineer

Responsibilities:

- Develops and performs design reviews, develops commissioning plans and specifications.
- Assists with performing energy studies.
- Coordinates the daily commissioning activities of the project from design through construction and warranty stages.
- Performs submittal reviews.
- Helps oversee and conduct systems testing and systems functional performance testing.
- Develops commissioning documentation and reports.

Education:

- Associate's Degree or junior college (Mechanical or Electrical preferred) or equivalent relevant experience.

Experience:

- 5 years of engineering related experience.

Project Engineer

Responsibilities:

- Assists the senior engineers in daily controls or commissioning activities.
- Assists with submittal reviews.
- Assists with performing energy studies.
- Conducts systems and component testing and systems functional performance testing.
- Contributes to commissioning documentation and reports.

Education:

- Associate's Degree or junior college (Mechanical or Electrical preferred) or equivalent relevant experience.

Experience:

- At least 2 years of engineering related experience.



Field Engineer

Responsibilities:

- Assists in managing daily controls or commissioning activities.
- Assists with submittal reviews.
- Installs metering, controls, and energy related components.
- Conducts systems and component testing and systems functional performance testing.
- Contributes to commissioning or controls documentation and reports.

Education:

- Vocational school or junior technical college.

Experience:

- At least 2 years of component installation experience.

Administrative (Clerical)

Responsibilities:

- Provides administration support/assistance to the project team including paperwork, typing and other office administration functions.
- Maintains filings for all projects.

Education:

- High school diploma.

Experience:

- 1 year of experience in an office environment. Proficient in using Microsoft programs.

Degree Equivalency Table

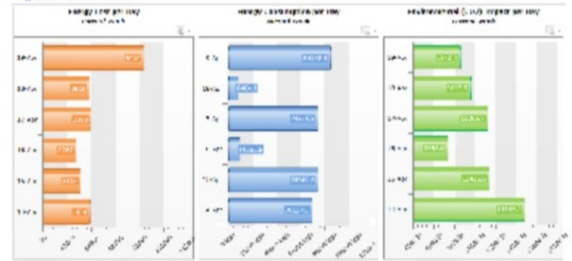
Degree Equivalency Table	Years of Experience
Associate’s Degree	4 years
Bachelor’s Degree	8 years
Bachelor’s Degree with Mechanical and/or Electrical Engineering major	12 years



SECTION III: SERVICE DESCRIPTIONS

Energy Analysis (EA)

TMG integrates and configures Energy AnalytiX® software as a part of our continuous commissioning services. Energy AnalytiX Software, is an industry leading Energy Management System (EMS) that focuses on energy data analysis to increase efficiency and reduce overall operational costs. It helps with improving energy usage patterns, monitors energy reliability, and even forecasts energy consumption. Information obtained from Energy AnalytiX can be used to:



- Optimize your energy management program
- Drill down to identify inefficient assets that consume too much energy
- Identify peak usage periods to load-balance assets and take advantage of off-peak rates
- Visualize energy usage per site, normalized by square foot or square meter
- Analyze carbon footprint per person / per site
- Monitor equipment energy usage trends and details
- Notify personnel with alerts when meters fail or energy usage is unexpectedly high
- Automatically email energy consumption and cost information to managers
- Leverage alternate energy sources for efficiency and cost savings

Fault Detection & Diagnostics (FDD)

TMG integrates and configures Facility AnalytiX® software as part of their continuous commissioning solutions. Facility AnalytiX® is a predictive building automation solution that leverages ICONICS' advanced Fault Detection and Diagnostics (FDD) technology at its core. It incorporates algorithms that weigh the probability of faults and advise management, operators and maintenance personnel of actions to prevent equipment failures or excessive use of energy. When equipment failures occur, advanced software technology provides automatic guidance to a list of causes sorted by probability, resulting in reduced downtime and lower costs to diagnose and repair. Information obtained from Facility AnalytiX® can be used to:



- Predict, reduce and eliminate equipment downtime
- Automate fault detection and deliver real-time notifications
- Reduce maintenance and determine probable causes



- Improve reliability and control
- Improve overall environmental quality
- Be notified “anywhere, anytime and on any platform”

Commissioning (Cx):

Commissioning Process Management: TMG’s Commissioning Process Management is a comprehensive commissioning process that goes beyond the traditional model by addressing all interacting building systems: building envelope, mechanical and plumbing systems, electrical requirements, and sustainability goals.



The process is built on the foundation of the Owner’s Project Requirements (OPR) which sets the project high-end goals that reflect the mission of the facility and its occupants. Commissioning Process Management reviews, observes, and documents that the building and all of its systems and assemblies are planned, designed, installed, tested, operated, and maintained to work as efficiently as possible end-to-end, top-to-bottom, year after year.

The Commissioning Process Management Service provides a continuous thread of knowledge from building inception through the end of its useful service life. Our services include the following:

- Design + Construction phase commissioning
- Measurement and verification implementation
- Green housekeeping and site management programs
- Operation and maintenance staff training

Automated Commissioning (ACx)

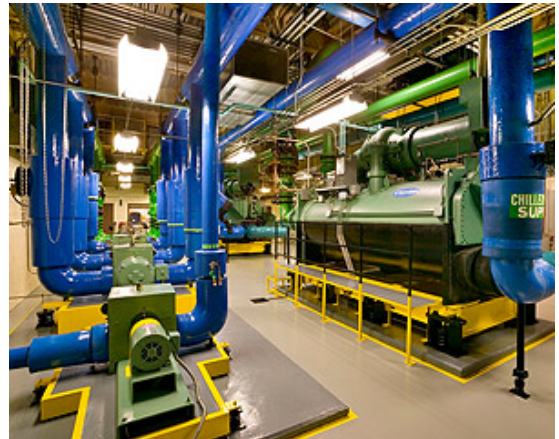
Automated Commissioning (ACx): TMG implements Facility AnalytiX software to detect and diagnose faults for various types of building and manufacturing equipment. The Facility AnalytiX service uses powerful Fault Detection and Diagnostics algorithms for determining probable causes when abnormal conditions are detected on monitored equipment.



Existing Building Commissioning (EBCx)

Existing Building Commissioning (EBCx): TMG begins the EBCx process by helping the owner develop the Current Facility Requirements (CFR). This process facilitates a better understanding of a building owner's needs and goals. The CFR serves as the basis for the recommendations made during the EBCx process.

Our team includes engineers with years of experience in commissioning and building optimization. Building systems are tested and examined as they interact with other systems. Sequences of operation are reviewed to determine potential operational improvements.



Once the building investigation is complete, TMG Consulting Engineers provide the owner with a EBCx report which details the results from the testing and provides recommendations for improving building performance in line with the CFR. Our services include the following:

- Development of the CFR
- Measurement and verification implementation
- Operations and Maintenance staff training

